

Durham
University
Social
Science

STEM
University
of Sheffield

9TH PROJECT CONTEST

英國大學專題競賽

由 **杜倫大學** 和 **雪菲爾大學** 主辦

優勝隊伍最高可獲得半額獎學金或 1500 英鎊等值禮券



參賽資格與規則：


全台高中職在校生，
詳細規章與報名資訊
請掃描 QRcode

重要日期：

2025 / 12 / 30 (二) 13:00 報名截止
2026 / 03 / 02 (一) 13:00 初賽影片繳件截止
2026 / 03 / 16 (一) 15:00 公布初賽結果
2026 / 03 / 31 (二) 13:00 決賽 PPT 繳件截止
2026 / 04 / 中下旬 另行通知入圍者並公告於官網

主辦單位： Durham
University

 University of
Sheffield

 StudyGroup

協辦單位：**ISC** 國際學生中心

競賽介紹

第九屆英國大學專題競賽熱力開跑！這項年度盛會致力於啟發學生的創意與跨領域整合能力，並提供高額獎學金及通往英國頂尖名校的入場券。歷屆活動已培育出眾多菁英與新星。今年依然由國際聲望卓著的世界百大社倫大學與雪菲爾大學在臺聯合主辦，期望學子們脫穎而出，在全球舞臺發光發熱！

Durham University - Social Science

Task

You are part of an International Sustainability Advisory Council made up of young researchers from Taiwan and the UK. Both governments have approached your team for fresh, creative, and socially focused solutions to make their countries more socially and politically sustainable. Your task is to identify a pressing social challenge in either Taiwan or the UK and propose a policy solution. You will research the issue, analyse possible responses, and make a clear, persuasive case for the policy you recommend. They want one finished policy proposal that could realistically be implemented in either Taiwan or the UK. You will present your research and policy in the format of your choice, for example, a PowerPoint presentation, academic poster, or infographic.

Steps 1. Choose a Social Challenge

Select one significant social or political issue affecting society today (some examples are provided below, but you can also choose your own issue).

Steps 2. Research the Issue

- Why is it important?
- Who is affected?
- What does existing research or data say?
- What policies or approaches currently exist to address this issue?

Steps 3. Develop Policy Options

- Propose at least two possible policy responses.
- Analyse the advantages and disadvantages of each.

Steps 4. Recommend Your Policy

- Choose the policy you believe works best.
- Explain why your solution is the most effective, realistic, and impactful.

*** Ensure that all sources used are properly referenced.**

Suggested Topics (choose one, or propose your own)

- Ageing populations and the challenge of elderly care
- Climate change and urban resilience (floods, heatwaves, etc.)
- Digital technology and the impact of AI on employment
- Inequality in education (urban-rural, class, gender, etc.)
- Mental health and wellbeing in young people
- Affordable housing in cities
- Migration and multicultural societies
- Gender equality in the workplace
- Voter turnout and political participation
- Youth political participation
- Digital democracy

For more details about the contest guidelines, please scan the QR code.



University of Sheffield - STEM

Task

Imagine you're a data scientist... This project challenges you to design a data-driven project that addresses a real-world social or environmental problem. You will not be required to analyse any real data; instead, you'll focus on the planning, methodology, and visualisation aspects of a data science project.

Steps 1. Define a Problem and Target Audience

Choose a specific social or environmental issue that can be investigated using data, and decide who you are targeting. Examples could include:

- Addressing traffic congestion in a major city.
- Improving waste management and recycling rates in a community.
- Understanding the factors that affect student well-being in schools.
- Identifying patterns in the spread of misinformation online.

Steps 2. Identify Data Sources

Where would this data come from? Who would be the source? How would you gather it? It could be data from a government website, social media, sensors, or surveys.

Steps 3. Formulate Key Questions

Based on the data you've identified, what are the most important questions you would ask to solve the problem? These questions should guide your analysis and lead to clear insights. For example, if you're tackling traffic, a question might be: "Which intersections have the highest number of accidents, and is there a correlation with the time of day or weather conditions?"

Steps 4. Propose a Solution and Visualisations

Based on your hypothetical findings, propose a practical, data-driven solution to your problem. Crucially, show how you would visualise your insights. You can create mock-up charts, graphs, or a dashboard to illustrate your findings and make them easy to understand for your audience.

Design Considerations

- Problem Statement:** Clearly explain the problem you're addressing, why it's important, and how the target stakeholder(s) is/are.
- Data Strategy:** Describe the types of data you would need and where you would get them.
- Methodology & Questions:** List the key questions you would ask and explain how answering them would help solve the problem.
- Hypothetical Findings & Visualisations:** Present your imagined findings and include hand-drawn or digitally created mock-ups of charts, graphs, or dashboards that would communicate these findings effectively.
- Proposed Solution:** Detail your data-driven solution. How would it work? What impact could it have?

For more details about the contest guidelines, please scan the QR code.

英國名校聯招



探索 QS世界排名TOP 100 大學，開啟你的菁英求學之旅



格拉斯哥大學 University of Glasgow
QS 英國排名12 / QS 世界排名 **79**



愛丁堡大學 The University of Edinburgh
QS 英國排名6 / QS 世界排名 **34**



杜倫大學 Durham University
CUG 英國排名 6 / QS 世界排名 **94**



里茲大學 University of Leeds
QS 英國排名13 / QS 世界排名 **86**



曼徹斯特大學 The University of Manchester
QS 英國排名7 / QS 世界排名 **35**



雪菲爾大學 The University of Sheffield
QS 英國排名15 / QS 世界排名 **92**



伯明翰大學 University of Birmingham
QS 英國排名11 / QS 世界排名 **76**



倫敦國王學院 King's College London
QS 英國排名5 / QS 世界排名 **31**

布里斯托大學 University of Bristol
QS 英國排名8 / QS 世界排名 **51**

南安普頓大學 University of Southampton
QS 英國排名14 / QS 世界排名 **87**



更多海外大學資訊 follow ISC 即刻掌握！



台灣學測 / 在校成績前進

紐約州立大學石溪分校 SBU

Stony Brook University

- U.S. News 美國大學排名 58
- U.S. News 美國公立大學排名 26

紐約州立大學水牛城分校 UB

University at Buffalo - SUNY

- U.S. News 美國大學排名 76
- U.S. News 美國公立大學排名 36

康乃狄克大學 UConn

University of Connecticut

- U.S. News 美國大學排名 70
- U.S. News 美國公立大學排名 32

喬治梅森大學 GMU

George Mason University

- U.S. News 美國大學排名 109
- U.S. News 美國公立大學排名 52

伊利諾大學芝加哥分校 UIC

University of Illinois Chicago

- U.S. News 美國大學排名 80
- U.S. News 美國公立大學排名 39

亞利桑那州立大學 ASU

Arizona State University

- U.S. News 美國大學排名 121
- U.S. News 美國公立大學排名 61

俄勒岡州立大學 OSU

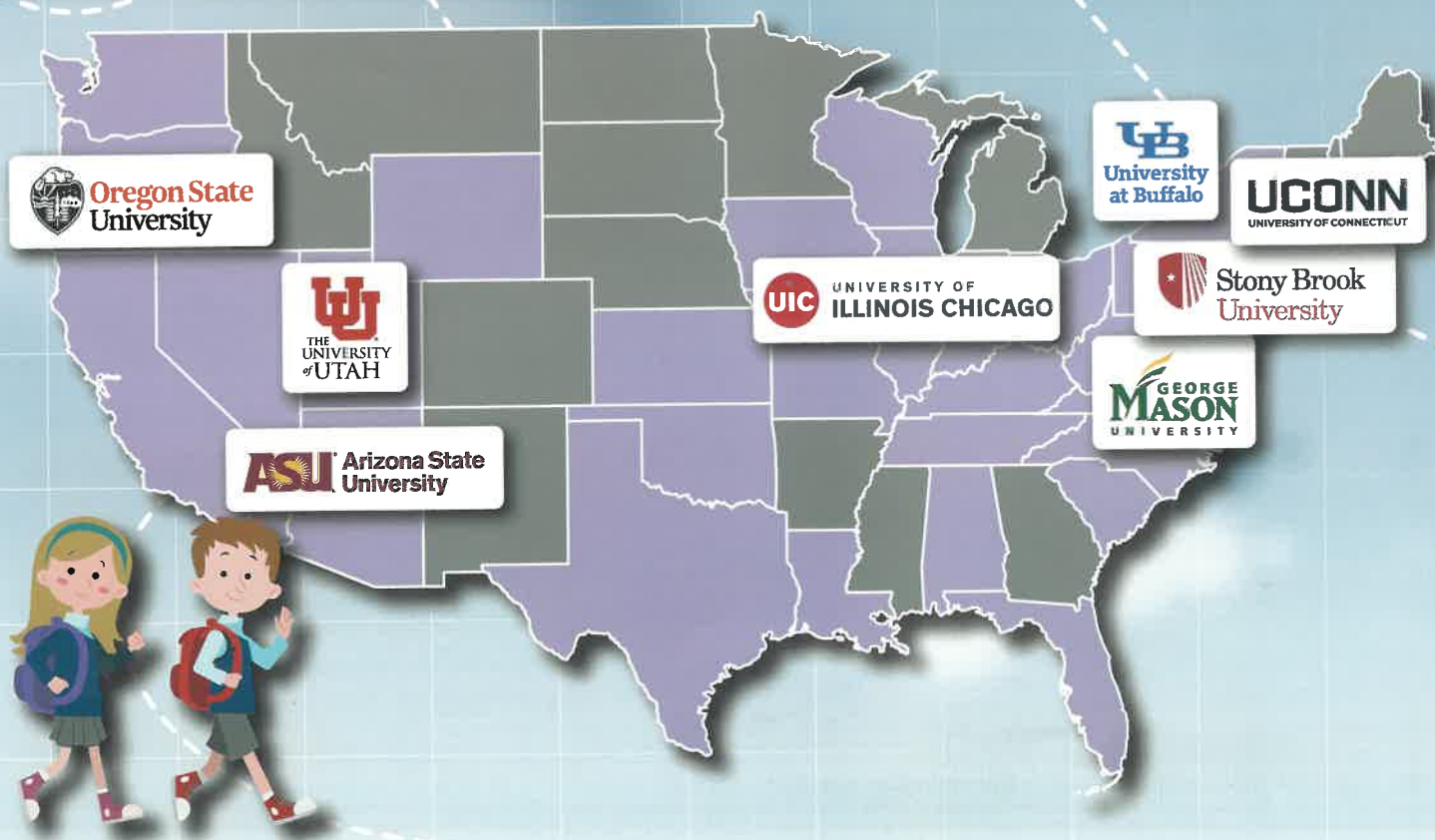
Oregon State University

- U.S. News 美國大學排名 144
- U.S. News 美國公立大學排名 74

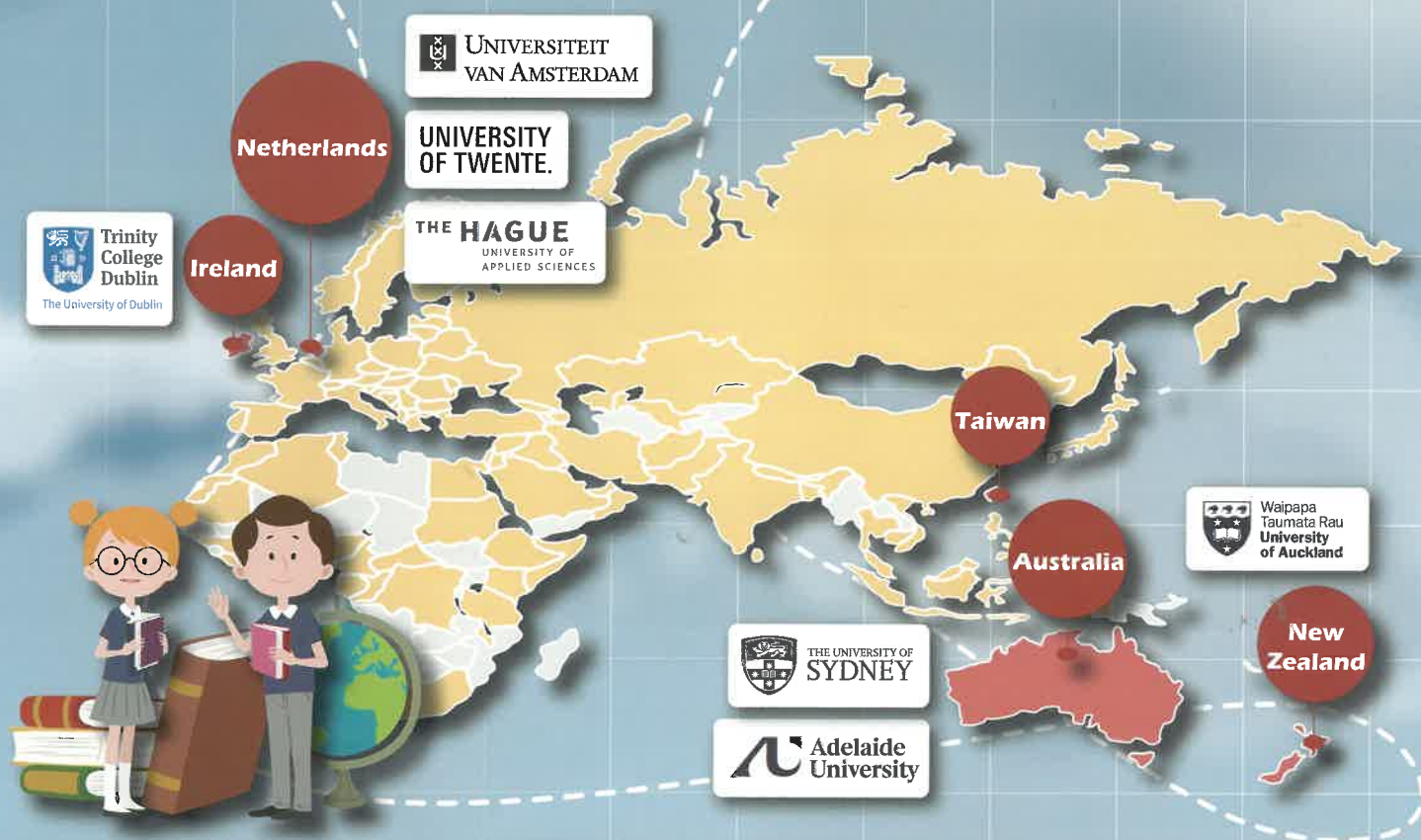
猶他大學 UofU

The University of Utah

- U.S. News 美國大學排名 136
- U.S. News 美國公立大學排名 69



美國百大 & 世界百強



雪梨大學 USYD

The University of Sydney

- QS 世界大學排名 25
- QS 澳洲大學排名 3

阿德雷德大學 AU

Adelaide University

- QS 世界大學排名 82
- QS 澳洲大學排名 8

聖三一學院 TCD

Trinity College Dublin

- QS 世界大學排名 75
- QS 愛爾蘭大學排名 1

奧克蘭大學 UoA

University of Auckland

- QS 世界大學排名 65
- QS 紐西蘭大學排名 1

阿姆斯特丹大學 UvA

University of Amsterdam

- QS 世界大學排名 53
- QS 荷蘭大學排名 1

特文特大學 UT

University of Twente

- THE 世界大學排名 180
- 創新與產業合作強、科技領域具優勢

海牙應用科技大學 THUAS

The Hague University of Applied Sciences

- 應用型大學領袖
- 國際化、實用導向教育



更多海外大學資訊 follow ISC 即刻掌握！



International Student Center

申請注意事項

申請條件會因國家、學校、科系不同而異
歡迎掃描官方LINE，由ISC升學輔導老師
免費為您量身打造海外留學計畫



學術成績要求 *Academic requirements*

在校成績

學測

IB

A Level

SAT

AP

...等

英文成績要求 *English requirements*

IELTS

TOEFL iBT

PTE

Duolingo ...等

其他要求 *Other requirements*

自傳

推薦信

CV簡歷

作品集

e.g. 建築、室內設計、動畫、視覺藝術類、表演藝術類...

入學考試

e.g. 醫學領域、法學、音樂、電腦科學...

面試

e.g. 醫學領域、獎學金資格、藝術類群...

各國申請重點 *Assessment Differences*

英國、歐洲

在校成績為主，部分校系採計學測，著重學術表現，申請時程較為集中

美國

在校成績為主，部分學校看重課外表現，爭取獎學金須盡早申請

澳洲

著重學術表現，採計學測越來越普及，申請文書準備較簡單

ISC

國際學生中心



www.isc-edu.com

2755-6363

台北市大安區復興南路一段 352 號 2 樓之 3

